

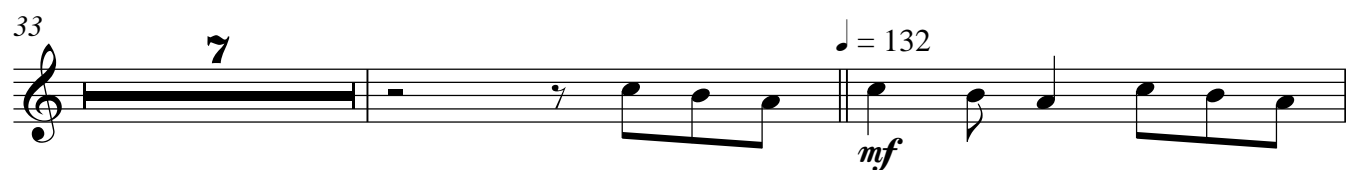
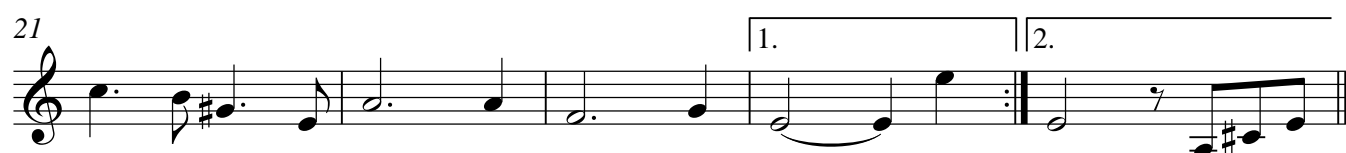




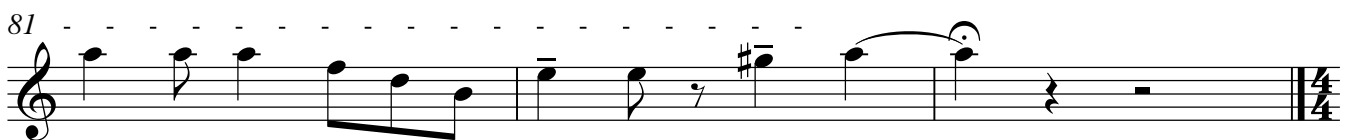
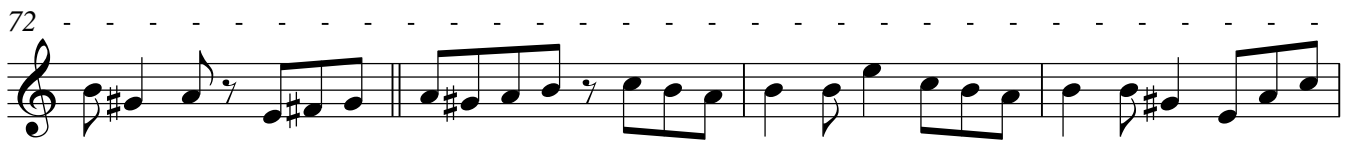
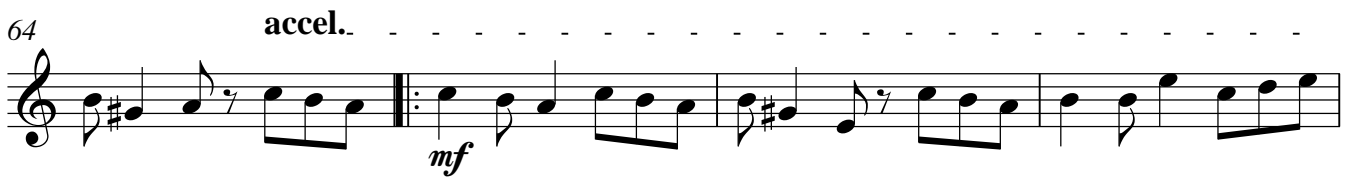
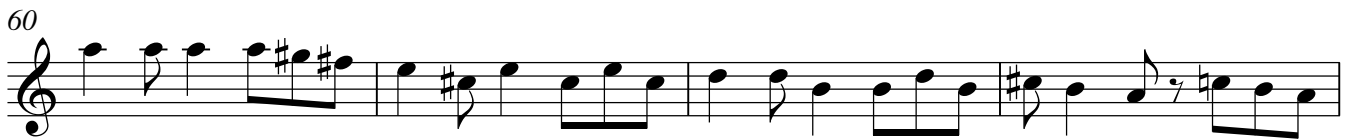
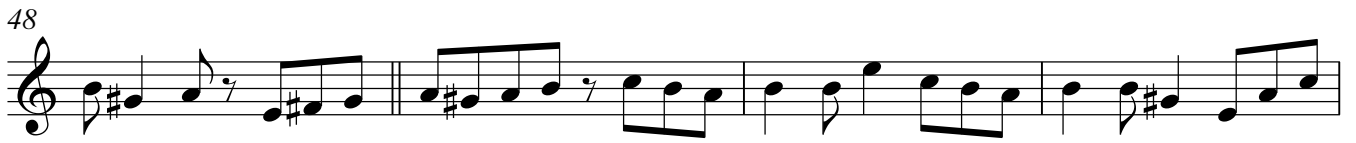
## 51. Slavisk Suite for Strygere

## Violin 1

Hans Engel 2008

INTRO - rubato  $\text{♩} = 80$ 

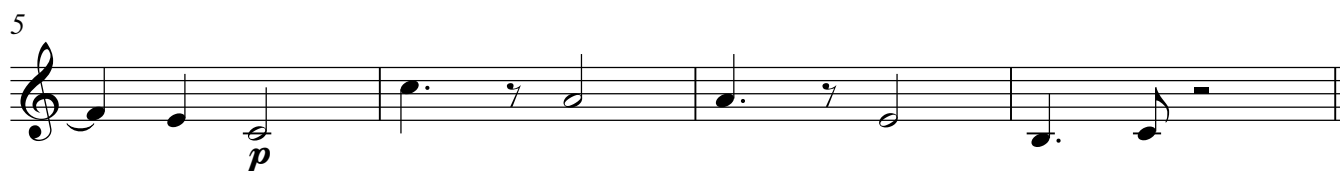
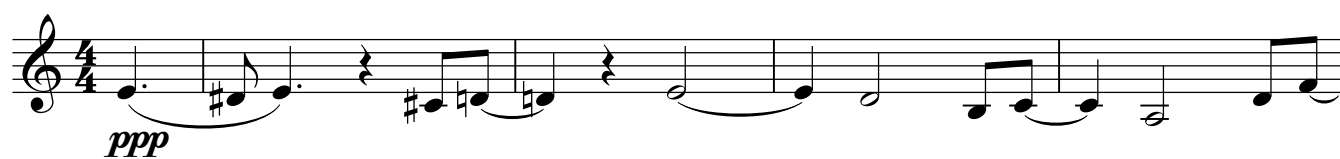
## Violin 1



## 51. Slavisk Suite for Strygere

## Violin2

Hans Engel 2008

INTRO - rubato  $\text{♩} = 80$ 

# Violin 2

# 51. Slavisk Suite for Strygere

## Bratch

Hans Engel 2008

INTRO - rubato  $\text{♩} = 80$   $\text{♩} = 120$

1 7

*mf*

12

17

21

1.

24

2.

28

33

*mf cresc.*

39

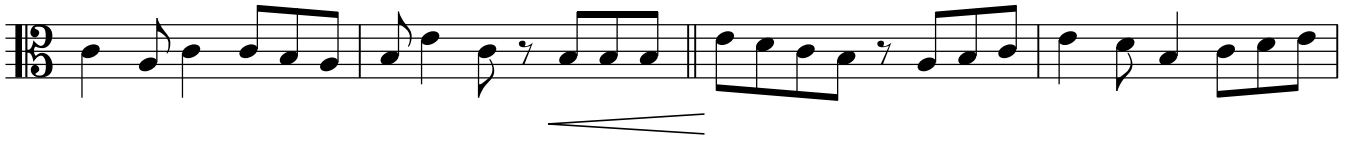
$\text{♩} = 132$

*p*

43

# Bratch

8



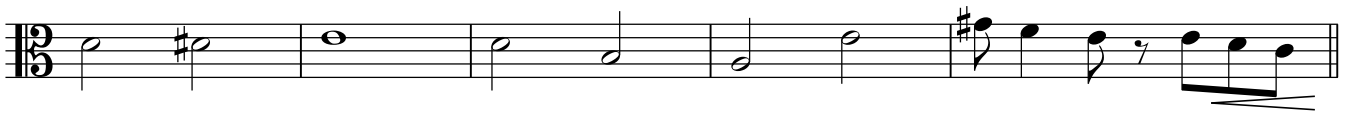
51



55



60



65



69



73



77



81





10

# Cello

41  $\text{♩} = 132$

41 *mp*

47 *mf*

52

57 *mf*

61 *accel.*

65 *mf*

69

73

78 *1.*  $\text{♩} = 172$  *2.* *rall.*

81

# 51. Slavisk Suite for Strygere

11

INTRO - rubato  $\text{♩} = 80$

## Bas

Hans Engel 2008

1 8 Am  $\text{♩} = 120$  E Am E Am

*pp*

12 Dm Am Dm Am

16 E Am Am E Am E Am

20 Am Dm Am E Am Dm G<sup>7</sup>

24 1 E Am 2 E A A D A

*p*

27 E<sup>7</sup> A D H<sup>7</sup> A A<sup>7</sup> E<sup>7</sup>

31 A E E A A D A

*pp*

35 E<sup>7</sup> A D H<sup>7</sup> A A<sup>7</sup> E<sup>7</sup>

39 A E E<sup>7</sup> Am Am E Am  $\text{♩} = 132$

*mp*

43 E Am Dm Am Dm

# Bas

47 Am E Am Am E Am

*mf*

51 E Am Am Dm Am E Am

55 Dm G7 E A A D A.

59 E7 A D H7 #A. A7 E7.

63 A E E7 Am *accel.* Am E Am

*mf*

67 E Am Dm Am Dm

71 Am E Am Am E Am

75 E Am Am Dm Am E Am

79 Dm G7 1. E7 Am  $\text{♩} = 172$  2. Am *rall.*

81 Dm E A