

29. Molina's Kæreste

Hans Engel 1992/05

Violin 1 $\text{♩} = 76$

Violin 1 score for 'Molina's Kæreste'. The piece is in 2/4 time with a tempo of 76. It features two distinct sections: a first section in D minor (2/4) and a second section in D major (3/4). The first section includes markings for 'Løbe-/Hurretrin' and 'Chassétrin'. The second section is marked 'Valsetrin'. The score includes various musical notations such as slurs, accents, and triplets, along with first and second endings. Chord symbols (Dm, Gm, A, A7, D, G) are placed above the staff. The piece concludes with a 'Fine' marking.

Violin 2

Violin 2 score for 'Molina's Kæreste'. The piece is in 2/4 time with a tempo of 76. It features two distinct sections: a first section in D minor (2/4) and a second section in D major (3/4). The first section includes markings for 'Løbe-/Hurretrin' and 'Chassétrin'. The second section is marked 'Valsetrin'. The score includes various musical notations such as slurs, accents, and triplets, along with first and second endings. Chord symbols (D, G, A7) are placed above the staff. The piece concludes with a 'Fine' marking.

29. Molina's Kæreste

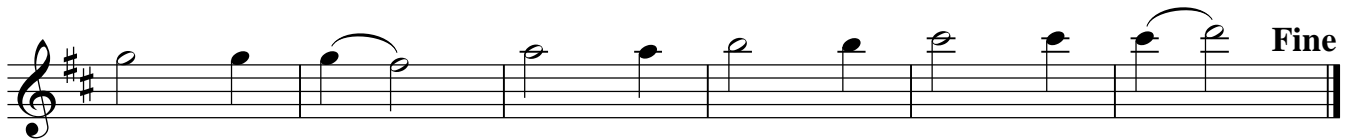
Hans Engel 1992

Fløjte $\text{♩} = 76$

Løbe-/Hurretrin



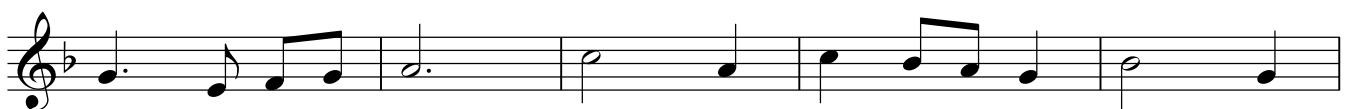
Chassétrin

 $\text{♩} = 56$ Valsetrin

A-klarinet

 $\text{♩} = 76$ Løbe-/Hurretrin

Chassétrin

 $\text{♩} = 56$ Valsetrin

Harmonika

29. Molina's Kæreste

Hans Engel 1992/07

♩ = 76

Dm Løbe-/Hurretrin Gm A

1. Dm 2. A⁷ Dm

Dm Chassétrin A Dm Gm A⁷

1. Dm 2. Dm D

♩ = 56

D Valsetrin A D

D G A D A

A D G A⁷ D Fine

DANSEBESKRIVELSE:

Opstilling 4 par i kvadrille.

1. tur a) Kreds, 16 løbetrin med og 16 løbetrin mod solen.
 - b) 1. og 2. par halvkæde til modsat plads, 4 chassétrin - derefter halvkæde hjem med 4 chassétrin. 3. og 4. par det samme.
 - c) Parvis vals i kreds, alm. fatning.
 2. - 6. tur er alle med 16 hurretrin med solen i afd. a (b og c er ens i alle ture):
 2. tur a) Ryggreb, omdansning.
 3. tur a) Tohånds damemølle.
 4. tur a) Tohånds herremølle.
 5. tur a) Damekreds, livfatning.
 6. tur a) Herrekreds, livfatning.
- Dansen slutter med 6. tur, afd. c), parvis vals ud i salen.

Bas ♩ = 76

Løbe-/Hurretrin

1. 2. Chassétrin

1.

♩ = 56

2. Valsetrin

Fine