

18. Lene's Vals

Hans Engel 1989

Violin 1

$\text{♩} = 60$

Violin 1 musical score in 3/4 time. The score consists of six staves of music. The first staff begins with a *mf* dynamic and includes chords Em, Am, G7, C, Am, and a first ending for Dm. The second staff has a first ending for F, G7, and C. The third staff starts with *mp* and includes chords Em, Am, E7, Am, Dm, and E7. The fourth staff begins with *f* and includes chords Am, Dm, G7, C, C, and Am. The fifth staff starts with *ff* and includes chords D7, G, G7, C, Dm, and G7. The sixth staff includes chords C, Am, Dm, G7, and first endings for C and C.

Violin 2

$\text{♩} = 60$

Violin 2 musical score in 3/4 time. The score consists of five staves of music. The first staff begins with a *mp* dynamic. The second staff has first endings for the first and second endings. The third staff starts with *f*. The fourth staff begins with *mf*. The fifth staff starts with *f* and includes first endings for the first and second endings.

18. Lene's Vals

Hans Engel 1989

Fløjte $\text{♩} = 60$

Fløjte $\text{♩} = 60$

mp

mf

f

A-klarinet

A-klarinet $\text{♩} = 60$

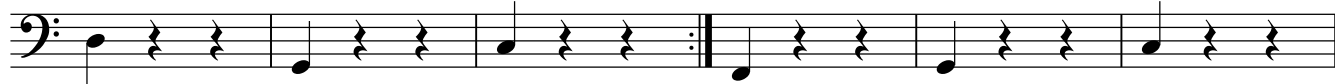
p

mf

mf

18. Lene's Vals

Hans Engel 1989

Bas $\text{♩} = 60$ Harmonika *pp* Em ♯ Am ♯ G⁷ ♯ C ♯ Am ♯ 1. Dm ♯ G⁷ ♯ C ♯ | 2. F ♯ G⁷ ♯ C ♯ Em ♯ Am ♯ E⁷ ♯ Am ♯ Am ♯ Dm ♯ E⁷ ♯ Am ♯ Am ♯ Dm ♯ G⁷ ♯ C ♯ C ♯ Am ♯ D⁷ ♯ G G⁷C ♯ Dm ♯ G⁷ ♯ C ♯ Am ♯ Dm ♯ G⁷ ♯ 1. C ♯

2. C

