

# 56. Gammelvalsen

## 1. Violin

Hans Engel 2010

♩. = 56

Am Dm E F Dm E<sup>7</sup>

8 Am *mf* Dm E F Dm

15 E<sup>7</sup> Am A D E

21 F Dm E<sup>7</sup> *mp* Am A

27 D E F Dm E<sup>7</sup> Am

33 A D E F<sup>#m</sup> *f*

38 D E<sup>7</sup> A D

44 E F<sup>#m</sup> D E<sup>7</sup> 1. A 2. A

A D E F<sup>#m</sup> D *f*

56 E<sup>7</sup> A D

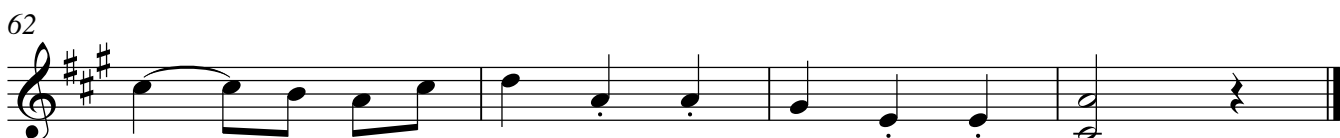
61 E F<sup>#m</sup> D E<sup>7</sup> A

## 56. Gammelvalsen

Hans Engel 2010

## 2. Violin

♩. = 56

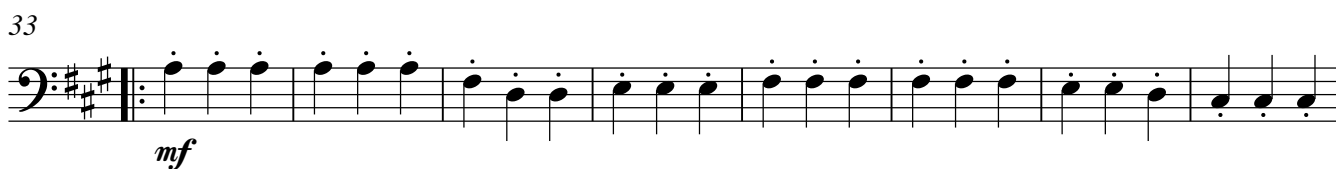




## 56. Gammelvalsen

Bas

Hans Engel 2010

 $\text{♩} = 56$ 

# 56. Gammelvalsen

5

A-Klarinet

Hans Engel 2010

*♩* = 56

3

*mf*

9

3

17

*mf*

3

24

29

4

3

*mp*

41

49

*mf*

55

60

## 56. Gammelvalsen

Fløjte

Hans Engel 2010

$\text{♩} = 56$

**3**

*mp*

8

**3**

17

*mp*

21

**3**

29

**4**

**3**

*p*

41

*mf*

56

61