

54. Fugato Danse

(Kvintetversion m. Fløjte)

Hans Engel 2009

Violin 1

Intro ♩ = 120

Musical notation for the Intro section, marked *mf*. It consists of two staves of music in 2/4 time, featuring eighth and sixteenth notes. The first staff ends with a double bar line and repeat signs. The second staff contains two first endings, labeled '1.' and '2.', which lead to a final cadence.

Tema fugato ♩ = 120

Musical notation for the Tema fugato section, marked *p*. It consists of two staves of music in 2/4 time. The first staff features a melodic line with slurs and a crescendo hairpin. The second staff features a rhythmic accompaniment of eighth notes, also marked with a crescendo hairpin.

FUGATO - DANSE er komponeret i "fugeret" stil, hvor et fuga-tema benyttes i de forskellige melodier samlet i denne dansesuite.

Menuet ♩ = 108

Musical notation for the Menuet section, marked *mf*. It consists of five staves of music in 3/4 time. The first two staves feature eighth-note patterns with triplets. The third and fourth staves continue with similar rhythmic patterns, including slurs and triplets. The fifth staff features a melodic line with slurs and a crescendo hairpin, ending with two first endings, labeled '1.' and '2.', which lead to a final cadence.

Violin 1

54. Fugato Danse

March ♩ = 108

Musical notation for the March section of 'Fugato Danse'. The piece is in G major (one sharp) and 2/4 time. It begins with a treble clef and a key signature of one sharp. The tempo is marked as ♩ = 108. The music starts with a quarter rest followed by a quarter note G4, then a series of eighth notes: A4, B4, C5, B4, A4, G4, F4, E4, D4, C4. The first ending consists of G4, A4, B4, C5, B4, A4, G4, F4, E4, D4, C4. The second ending consists of G4, A4, B4, C5, B4, A4, G4, F4, E4, D4, C4, followed by a quarter rest. The dynamic marking *f* is placed below the first measure.

Vals ♩ = 56

Musical notation for the Vals section of 'Fugato Danse'. The piece is in G major (one sharp) and 3/4 time. It begins with a treble clef and a key signature of one sharp. The tempo is marked as ♩ = 56. The music starts with a quarter note G4, followed by a half note A4-B4, then a quarter note C5, B4, A4, G4, F4, E4, D4, C4. The dynamic marking *mf* is placed below the first measure.

Svejtrit ♩ = 76

Musical notation for the Svejtrit section of 'Fugato Danse'. The piece is in G major (one sharp) and 2/4 time. It begins with a treble clef and a key signature of one sharp. The tempo is marked as ♩ = 76. The music starts with a quarter note G4, followed by a half note A4-B4, then a quarter note C5, B4, A4, G4, F4, E4, D4, C4. The dynamic marking *f* is placed below the first measure.

Polka ♩ = 120

Musical notation for the Polka section of 'Fugato Danse'. The piece is in G major (one sharp) and 2/4 time. It begins with a treble clef and a key signature of one sharp. The tempo is marked as ♩ = 120. The music starts with a quarter note G4, followed by a half note A4-B4, then a quarter note C5, B4, A4, G4, F4, E4, D4, C4. The dynamic marking *f* is placed below the first measure. The second ending consists of G4, A4, B4, C5, B4, A4, G4, F4, E4, D4, C4, followed by a quarter rest. The dynamic marking *mf* is placed below the first measure of the second ending.

54. Fugato Danse

Violin 2

(Kvintetversion)

Hans Engel 2009

Intro ♩ = 120

Tema fugato

*FUGATO - DANSE er komponeret i "fugeret" stil,
hvor et fuga-tema benyttes i de forskellige
melodier samlet i denne dansesuite.*

Menuet ♩ = 108

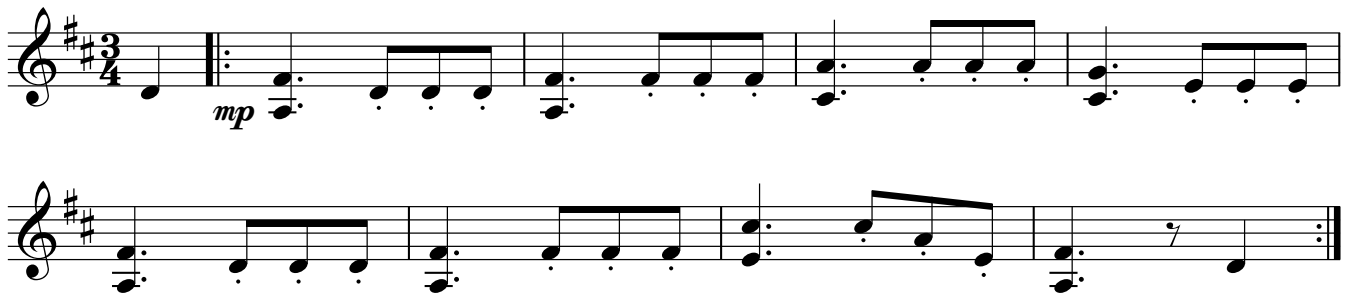
54. Fugato Danse

Violin 2

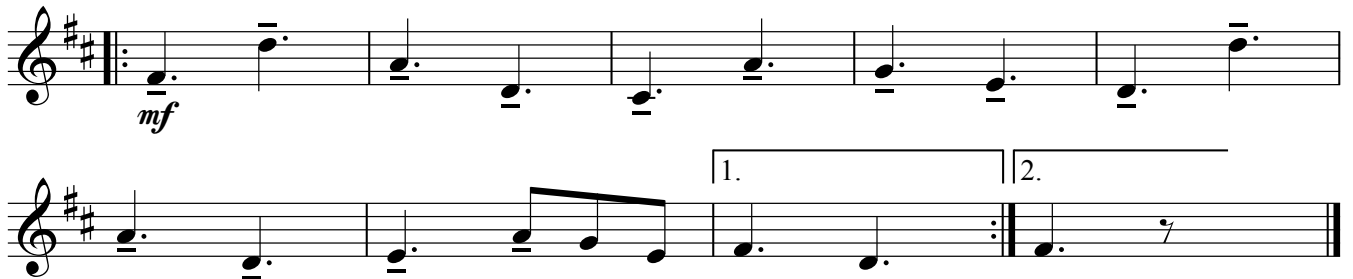
March ♩ = 108



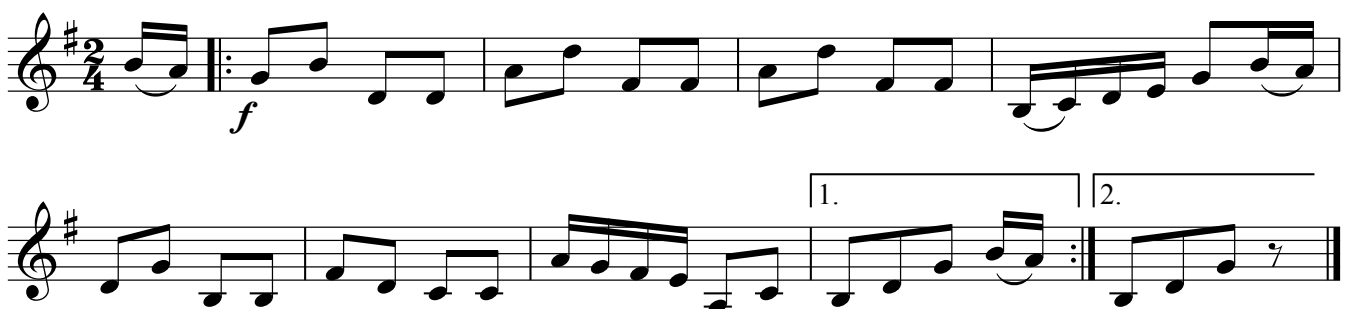
Vals ♩ = 56



Svejtrit ♩ = 76



Polka ♩ = 120



54. Fugato Danse

A-klarinet

(Kvintetversion)

Hans Engel 2009

Intro ♩ = 120



Tema fugato



*FUGATO - DANSE er komponeret i "fugeret" stil,
 hvor et fuga-tema benyttes i de forskellige
 melodier samlet i denne dansesuite.*

Menuet ♩ = 108

Menuetten gentages ad lib.

54. Fugato Danse

A-klarinet

March ♩ = 108

mf

Vals ♩ = 56

mp

Svejtrit ♩ = 76

f

Polka ♩ = 120

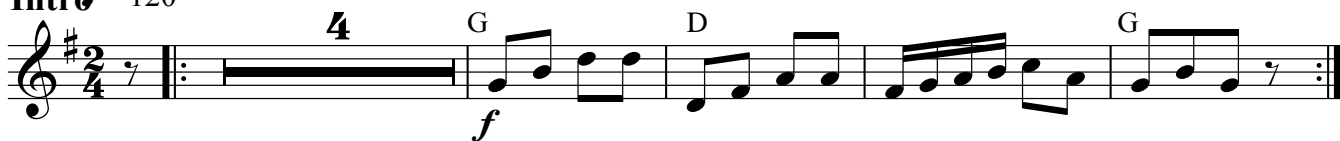
f

54. Fugato Danse

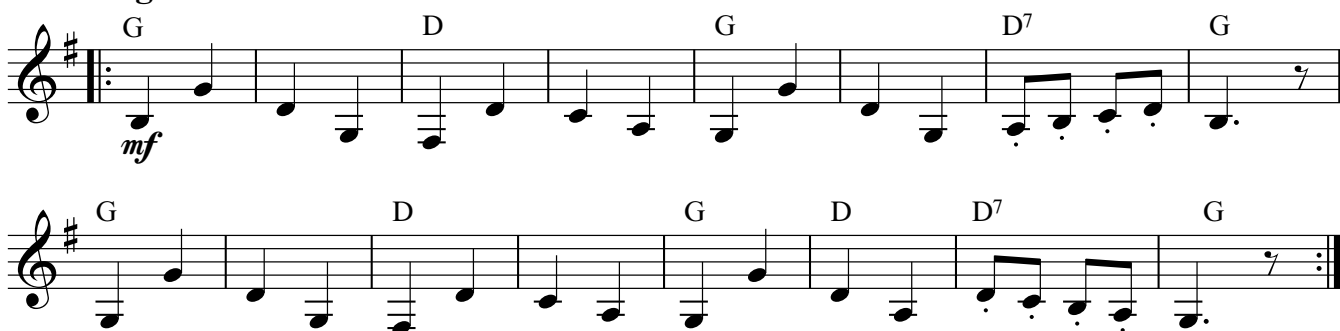
Harmonika

(Kvintetversion)

Hans Engel 2009

Intro $\text{♩} = 120$ 

Tema fugato



*FUGATO - DANSE er komponeret i "fugeret" stil,
hvor et fuga-tema benyttes i de forskellige
melodier samlet i denne dansesuite.*

Menuet $\text{♩} = 108$

54. Fugato Danse

Harmonika

March ♩ = 108

March ♩ = 108

Chords: G, D, G, D, D⁷, 1. G, 2. G

Dynamics: *mf*

Vals ♩ = 56

Vals ♩ = 56

Chords: D, A, D, A⁷, D

Dynamics: *mf*

Svejtrit ♩ = 76

Svejtrit ♩ = 76

Chords: D, A, D, A⁷, D

Dynamics: *mf*

Polka ♩ = 120

Polka ♩ = 120

Chords: G, D, G, G, D, G, G

Dynamics: *f*

54. Fugato Danse

(Kvintetversion)

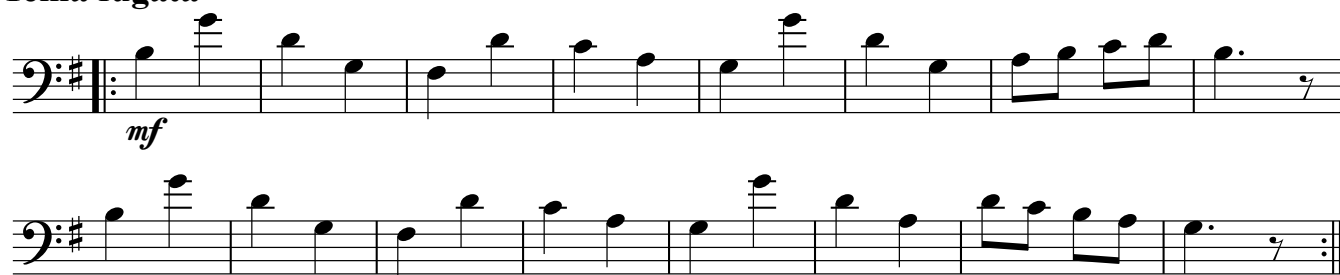
Hans Engel 2009

Bas

Intro ♩ = 120



Tema fugata



*FUGATO - DANSE er komponeret i "fugeret" stil,
hvor et fuga-tema benyttes i de forskellige
melodier samlet i denne dansesuite.*

Menuet ♩ = 108

Menuetten gentages ad lib. *V.S.*

54. Fugato Danse

Bas

March ♩ = 108 arco

Musical score for the March section of 'Fugato Danse'. It consists of two staves of music in bass clef with a key signature of one sharp (F#) and a 2/4 time signature. The tempo is marked as ♩ = 108 and the playing style is arco. The first staff begins with a dynamic marking of *mf*. The second staff contains a first ending (1.) and a second ending (2.) leading to a repeat sign.

Vals ♩ = 56

Musical score for the Vals section of 'Fugato Danse'. It consists of one staff of music in bass clef with a key signature of two sharps (F# and C#) and a 3/4 time signature. The tempo is marked as ♩ = 56 and the playing style is pizz. The dynamic marking is *mf*.

Svejtrit ♩ = 76 pizz.

Musical score for the Svejtrit section of 'Fugato Danse'. It consists of two staves of music in bass clef with a key signature of two sharps (F# and C#) and a 2/4 time signature. The tempo is marked as ♩ = 76 and the playing style is pizz. The dynamic marking is *mf*. The second staff contains a first ending (1.) and a second ending (2.) leading to a repeat sign.

Polka ♩ = 120 pizz. ad lib.

Musical score for the Polka section of 'Fugato Danse'. It consists of two staves of music in bass clef with a key signature of one sharp (F#) and a 2/4 time signature. The tempo is marked as ♩ = 120 and the playing style is pizz. ad lib. The dynamic marking is *mf*. The second staff contains a first ending (1.) and a second ending (2.) leading to a repeat sign.

54. Fugato Danse

Fløjte

Hans Engel 2009

Intro ♩ = 120

4 *f*

Tema fugato ♩ = 120

mf

*FUGATO - DANSE er komponeret i "fugeret" stil,
hvor et fuga-tema benyttes i de forskellige
melodier samlet i denne dansesuite.*

Menuet ♩ = 108

7 *mf*

f

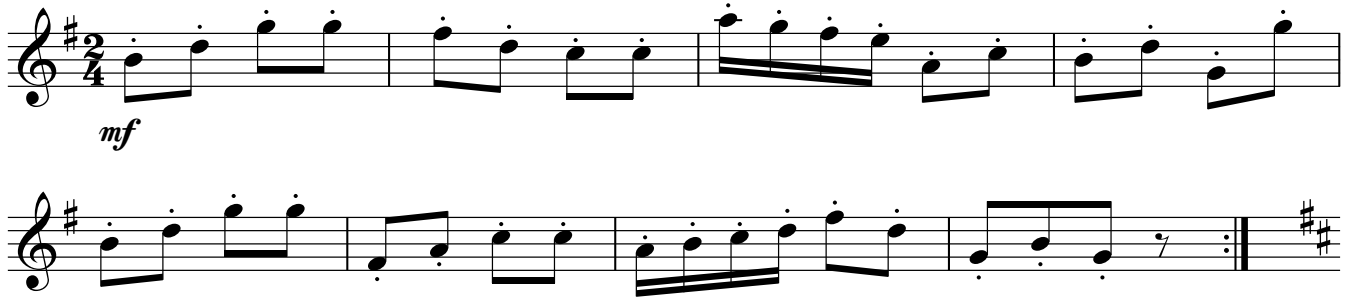
1. 2.

Menuetten gentages ad lib.

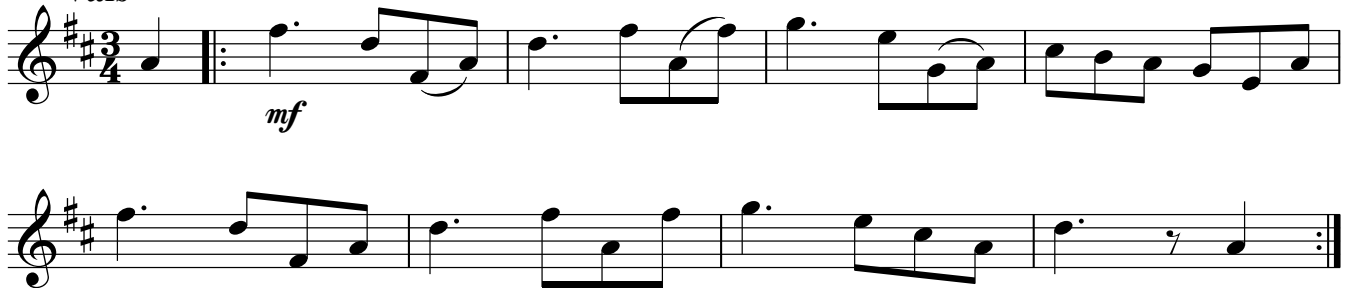
54. Fugato Danse

Fløjte


March ♩ = 108



Vals ♩ = 56



Svejtrit ♩ = 76



Polka ♩ = 120

