

# 34. Den sidste Vals

## Violin 1

Hans Engel 1990

$\text{♩} = 56$

*mf* G Em Am G C G

7 D G Em G C

13 G C D<sup>7</sup> G G *f*

17 G C D G Am H<sup>7</sup> Em Am

24 G C D<sup>7</sup> Em E<sup>7</sup> Am

31 D<sup>7</sup> G *mf* Em D<sup>7</sup> Em Am

38 G A<sup>7</sup> D<sup>7</sup> *f* Em

43 D G C G D G *ff*

49 Em Am G<sup>7</sup> C D Em D<sup>7</sup> G

57 G C G C F<sup>#7</sup> Hm D<sup>7</sup> G **Fine**

# 34. Den sidste Vals

Hans Engel 1990

## Violin 2

*♩* = 56  
*mf*

70 8

13 1. 2. *f*

18 21

24

31 *mp*

38 *mf*

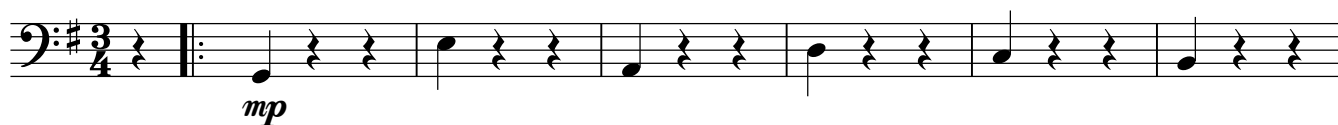
43

49 *ff*

57 **Fine**

## 34. Den sidste Vals

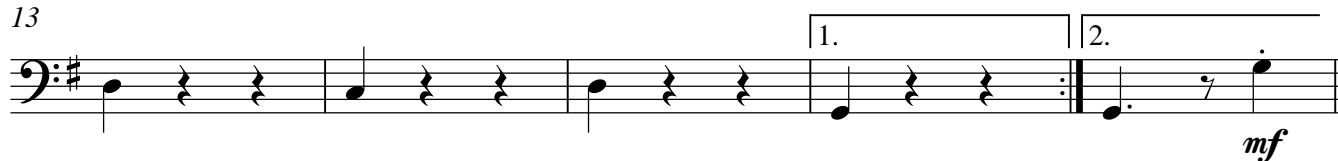
Hans Engel 1990

Bas  $\text{♩} = 56$ 

7



13



17



24



31



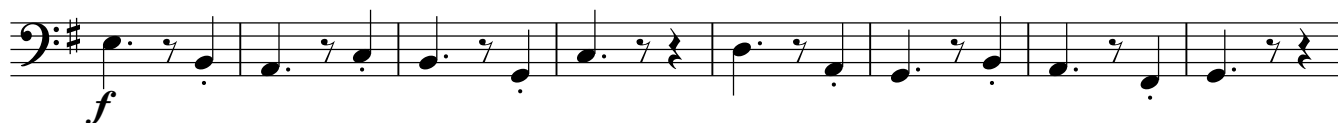
38



44



49



57

